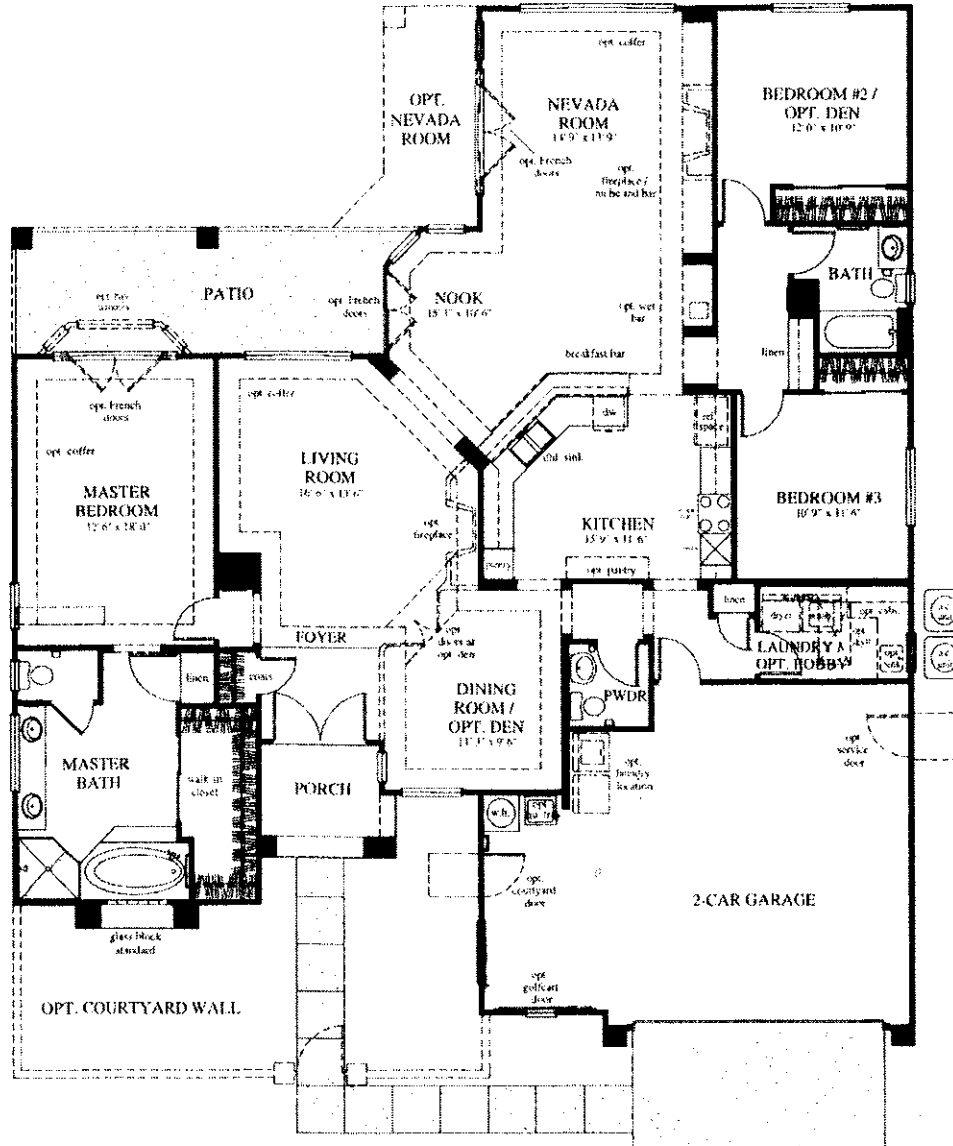


THE ARLINGTON

The Arlington is brimming with designer features and provides plenty of space to entertain. Its bright and airy floor plan gives this marvelous home a sunny disposition.



- 3 bedrooms • 2-1/2 bathrooms • living area • dining area (optional den) • kitchen
- breakfast area • Nevada room • utility room • 2-car garage and cart storage
- covered patio • approximately 2,234 livable square feet
- optional expanded Nevada Room